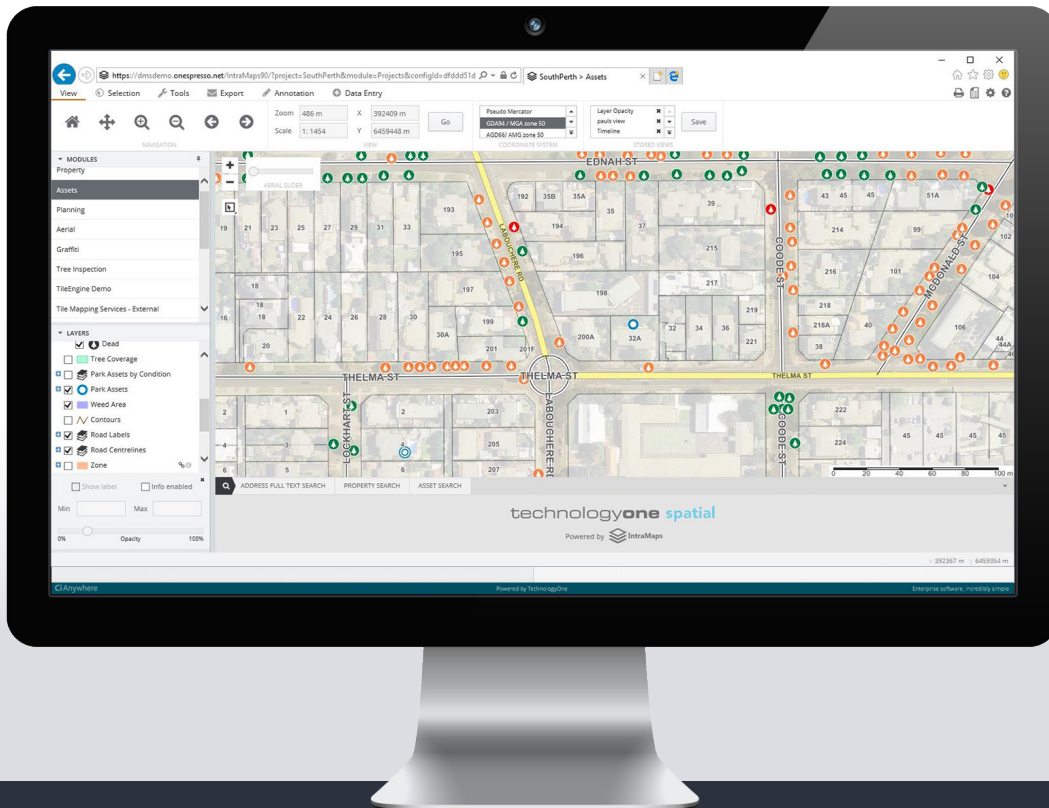


SPATIAL INTRAMAPS ENTERPRISE

Enterprise spatial viewing application providing access to spatial data on any connected device.



KEY FEATURES AND BENEFITS

- HTML5 application supported across all current web browsers
- Responsive design supports both mobile and desktop platforms
- Combine a wide range of spatial data layers including aerial and satellite photography, terrain elevation data and other 2D/3D information layers
- Access for administrators to manage wide range of configuration parameters
- Flexible data model for seamless integration with other corporate information

Administer centrally via ConfigManager

Enterprise-level configuration of your spatial data is easy to maintain with ConfigManager. GIS administrators maintain full control over all IntraMaps features and system configuration via ConfigManager. Administrators can access IntraMaps configuration locally or remotely through the intuitive Windows application to manage the wide range of configuration parameters that make IntraMaps a comprehensive and flexible solution. All configuration parameters are managed in an XML file allowing administrators to quickly construct and test new configuration settings. With a comprehensive security model, administrators can easily control user access to sensitive information.

HTML5 and Javascript

IntraMaps runs on all modern web browsers and uses HTML5 and Javascript, removing the need for additional plug-ins to run the application. This simplifies deployment and reduces system administration overheads.

Flexible data model

IntraMaps' flexible data model supports integration of multiple corporate data sources using standard SQL queries. IntraMaps also incorporates a comprehensive API for bi-directional application integration with a range of commonly used enterprise applications.

Intuitive user interface

Make spatial functionality available across your entire organisation with a user interface that incorporates the latest web design trends and self-service capability. With responsive design built into the user interface, IntraMaps can be accessed from anywhere and on any device.

Easy, authorised data entry

Real time data editing means departments can create and update spatial data and related attributes without complicated desktop software and training. IntraMaps can be configured to provide authorised users with the ability to capture spatial data and add attributes using predefined form templates directly from their web browser. IntraMaps also supports annotation functionality, including drawing tools for custom symbols, lines, polygons and text boxes. Annotations can also be saved and used in IntraMaps printing and reporting.

Scalable architecture

The IntraMaps architecture is highly scalable, providing a proven robust spatial platform that can support large numbers of users without the need for complex server architecture. The IntraMaps Server application is based on web services that can be optimised across the available server platform and easily scaled to support additional server resources as required.

Data sharing with government agencies

IntraMaps provides support for real time geospatial data delivery through Web Feature Service (WFS) and Web Mapping Service (WMS), including appropriate controls and security over user access.

